

1.0 Reference and Address			
Report Number	230914057GZS-001	Original Issued: 4-Dec-2023	Revised: None
Standard(s)	Electric Heating Appliances [UL 499:2014 Ed.14+R:14Jun2022] Hairdressing Equipment (R2012) [CSA C22.2#36:2008 Ed.7+U1;U2]		
Applicant	ZheJiang Beijing Technology Co., Ltd	Manufacturer 1	<b>ZheJiang Beijing Technology Co., Ltd</b>
Address	No. 258, Qingchuan road, Huzhen town, Jinyun County, LISHUI CITY, Zhejiang Province	Address	No. 258, Qingchuan road, Huzhen town, Jinyun County, LISHUI CITY, Zhejiang Province
Country	China	Country	China
Contact	Yin ximing	Contact	Yin ximing
Phone	86-15016140053	Phone	86-15016140053
FAX	NA	FAX	NA
Email	<a href="mailto:saming@pawtech.com.cn">saming@pawtech.com.cn</a>	Email	<a href="mailto:saming@pawtech.com.cn">saming@pawtech.com.cn</a>

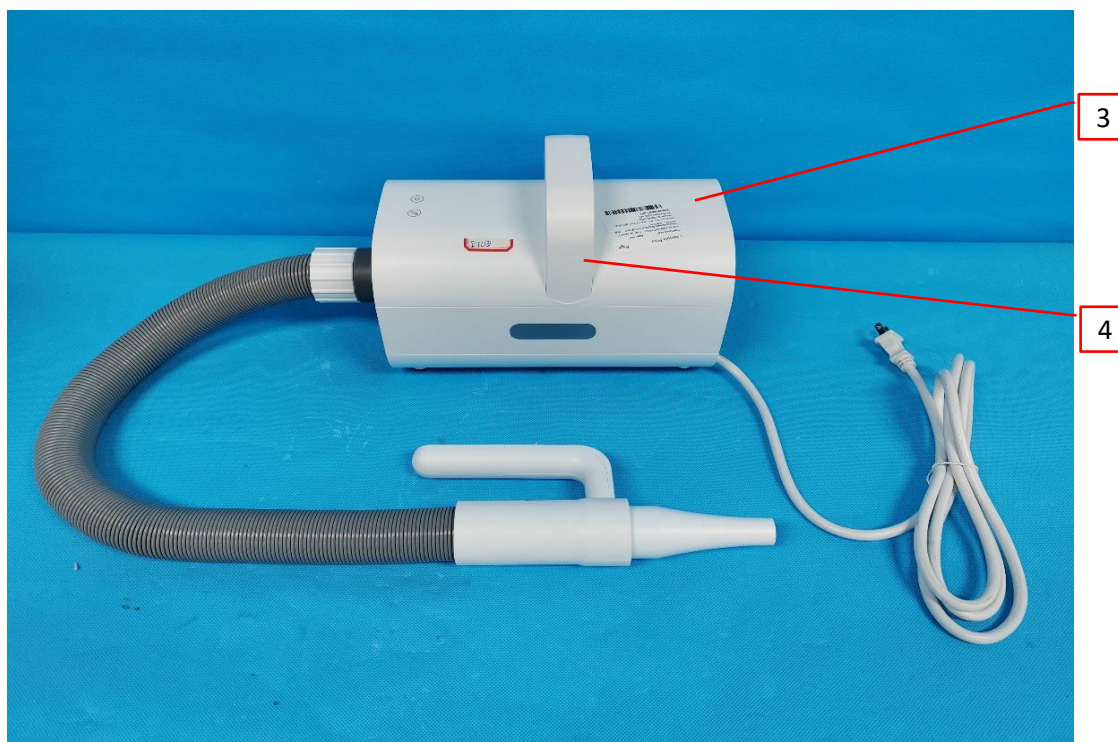
2.0 Product Description	
Product	Pet dryer
Brand name	NA
Description	The products covered by this report is Pet dryer, suitable for household and indoor use. Provided with a 2-wire polarized attachment plug.
Models	BJ-PB02A, BJ-PB02B.
Model Similarity	BJ-PB02A and BJ-PB02B are the same except the handle.
Ratings	120V, 60Hz, 1750W.
Other Ratings	NA

### 3.0 Product Photographs

**Photo 1** - Overall view of model BJ-PB02A



**Photo 2** - External view of model BJ-PB02A





### 3.0 Product Photographs

**Photo 3** - External view of model BJ-PB02A



**Photo 4** - External view of model BJ-PB02A

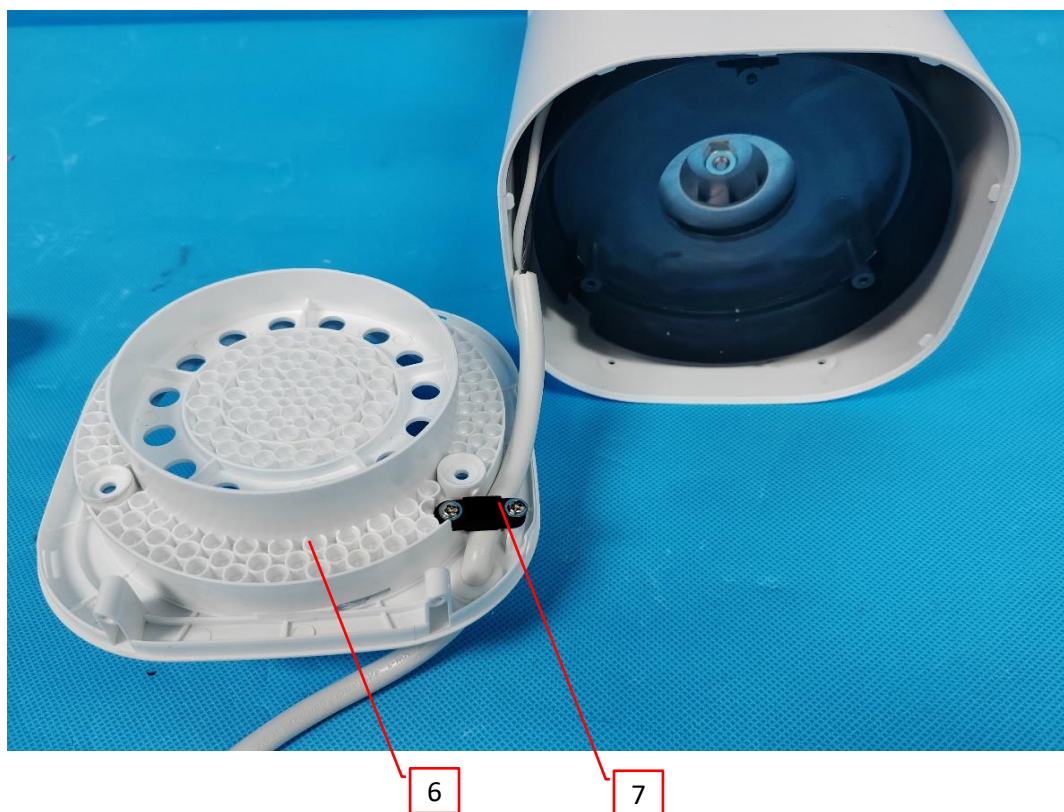


### 3.0 Product Photographs

**Photo 5** - Internal view of model BJ-PB02A



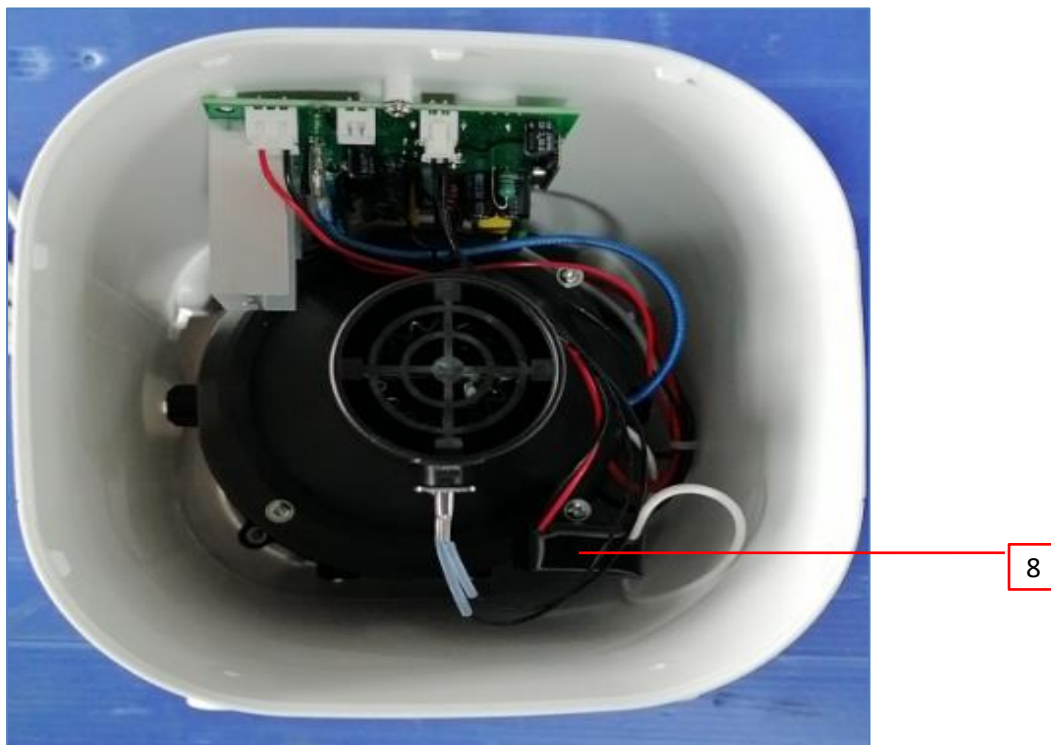
**Photo 6** - Internal view of model BJ-PB02A



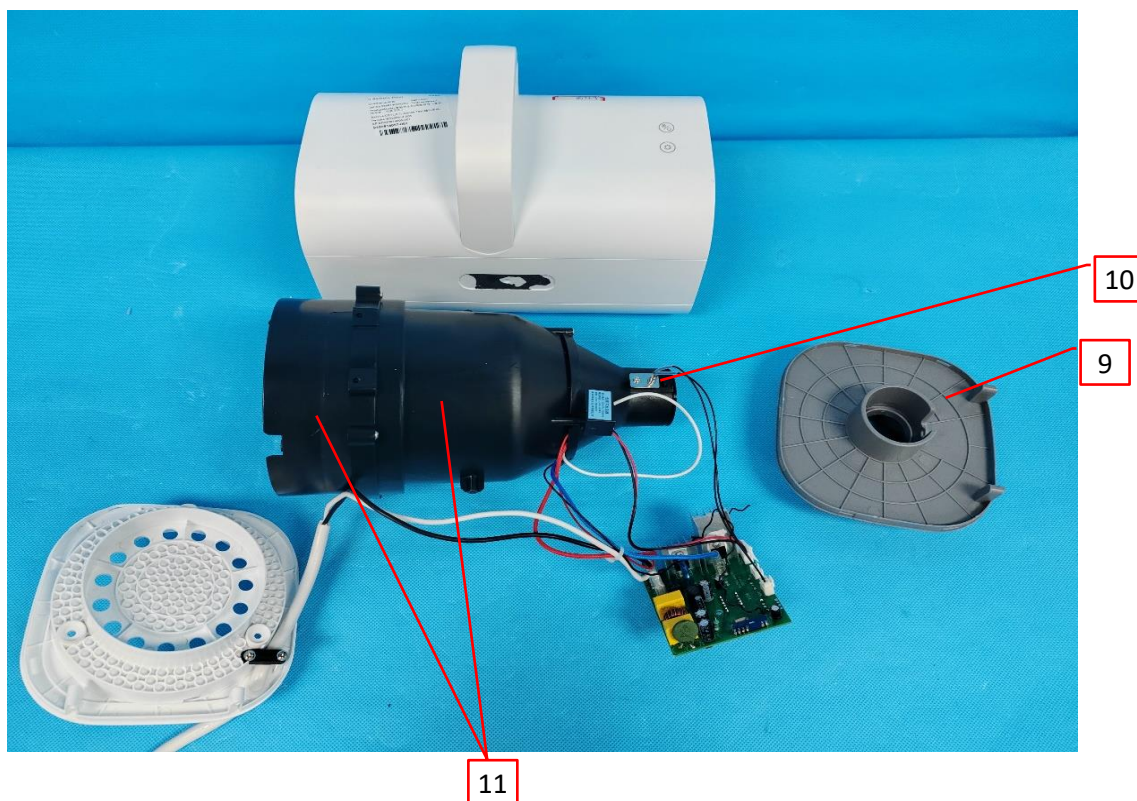


### 3.0 Product Photographs

**Photo 7** - Internal view of model BJ-PB02A



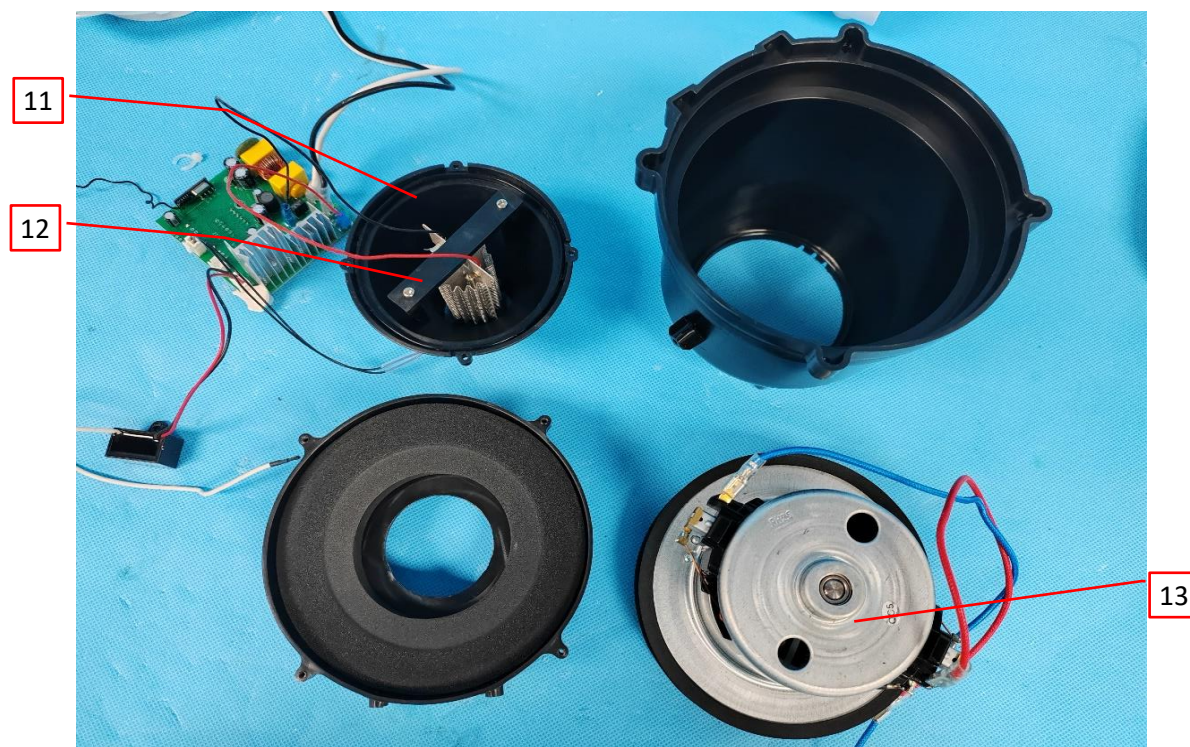
**Photo 8** - Internal view of model BJ-PB02A



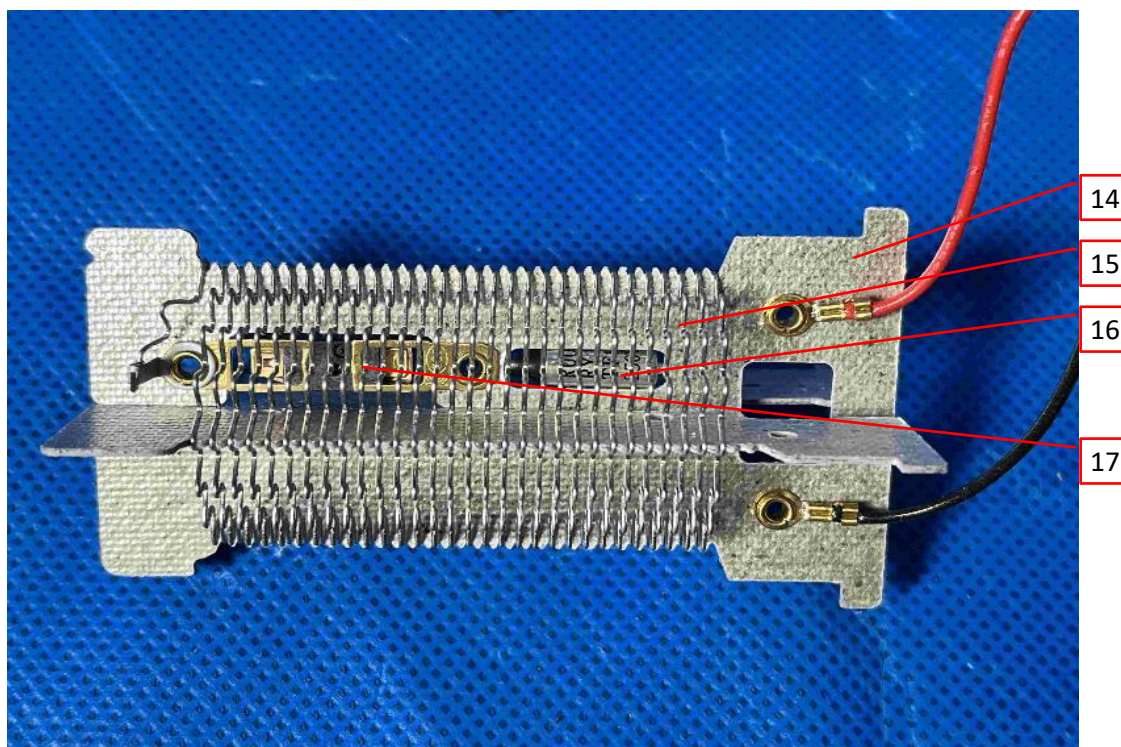


### 3.0 Product Photographs

**Photo 9** - Internal view of model BJ-PB02A



**Photo 10** - Internal view of model BJ-PB02A





### 3.0 Product Photographs

**Photo 11** - Internal view of motor V1J-PH22-T



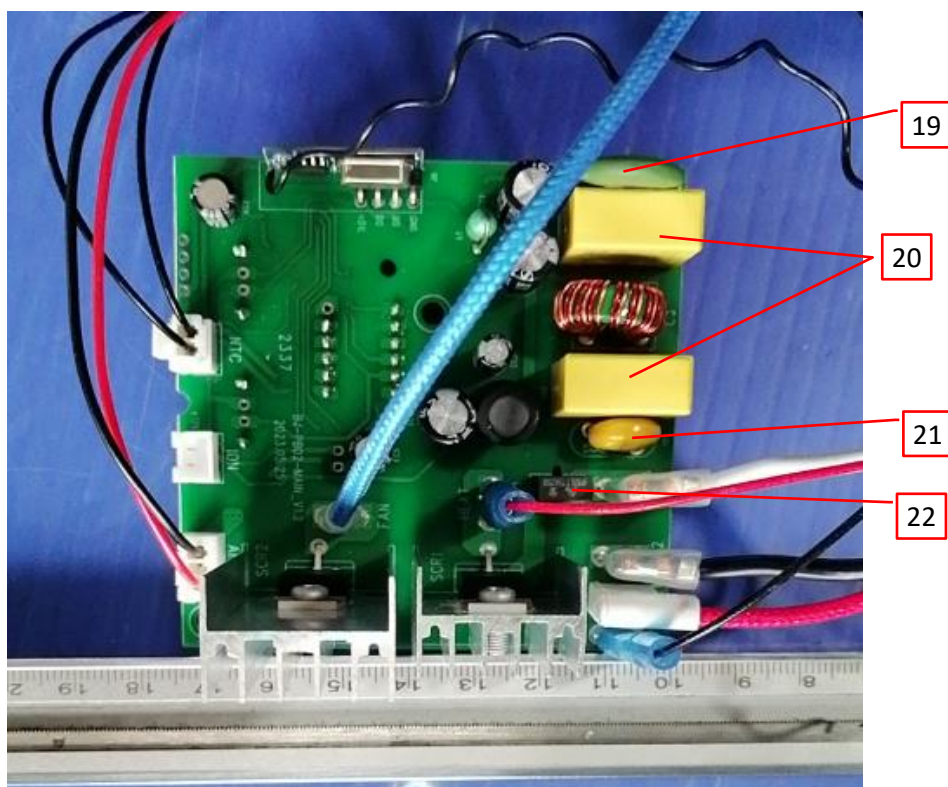
**Photo 12** - Internal view of motor V1J-PH22-T



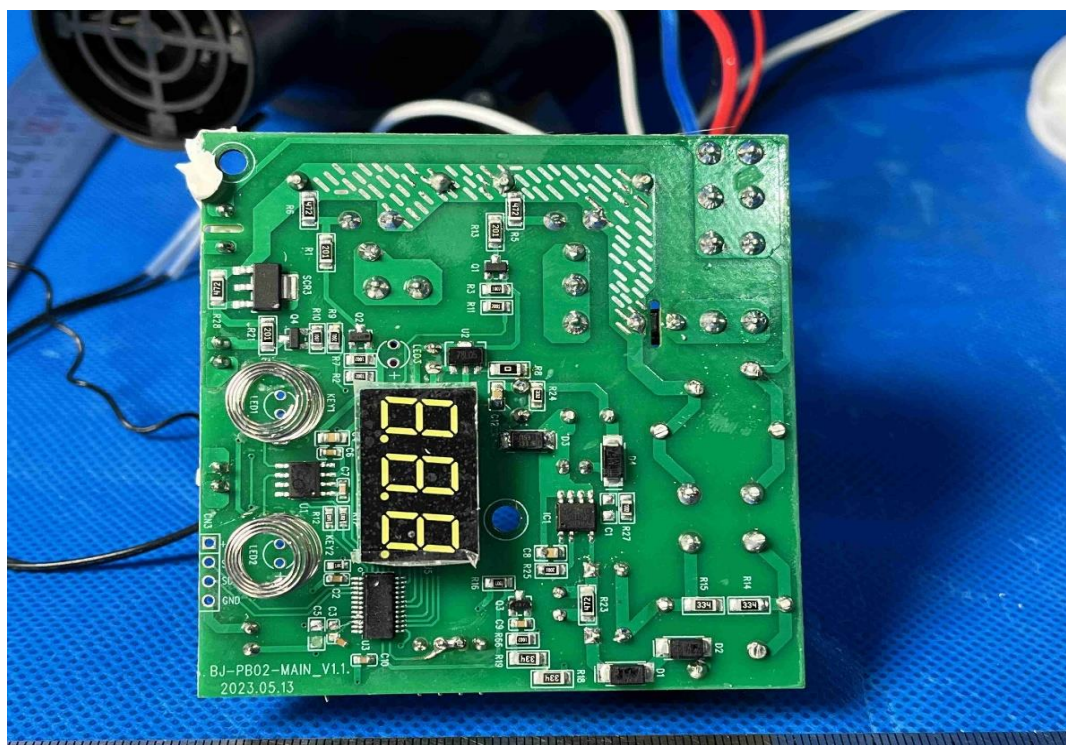


### 3.0 Product Photographs

**Photo 13** - Power board view of model BJ-PB02A



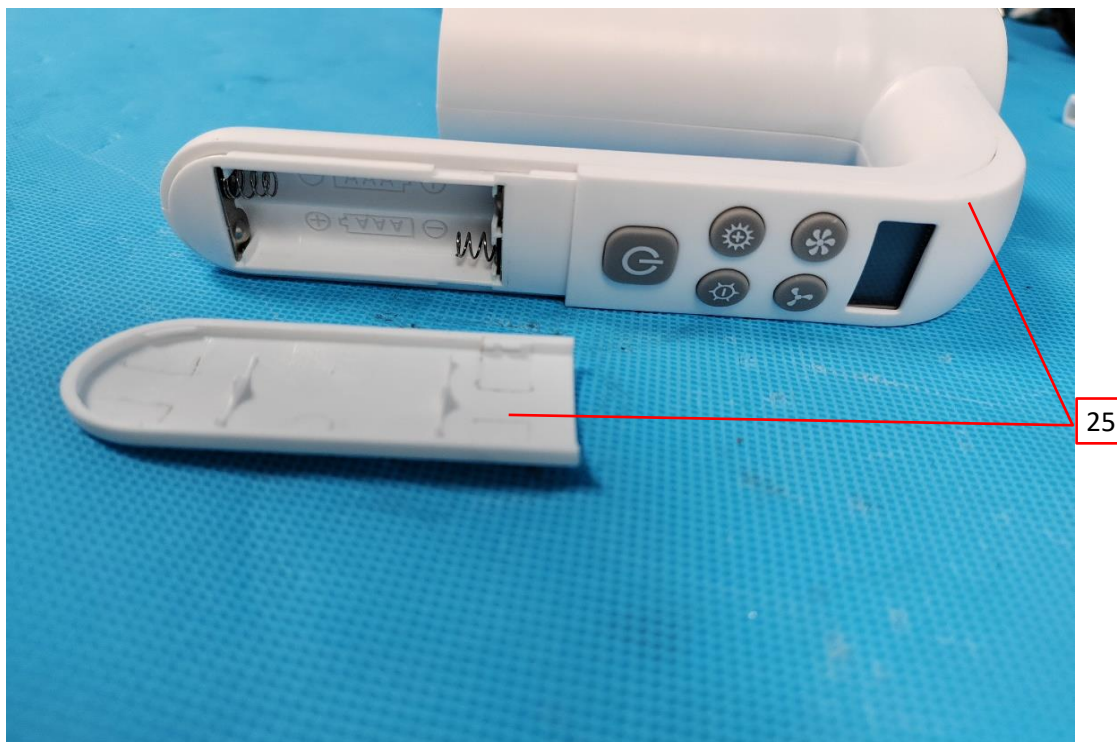
**Photo 14** - Power board view of model BJ-PB02A



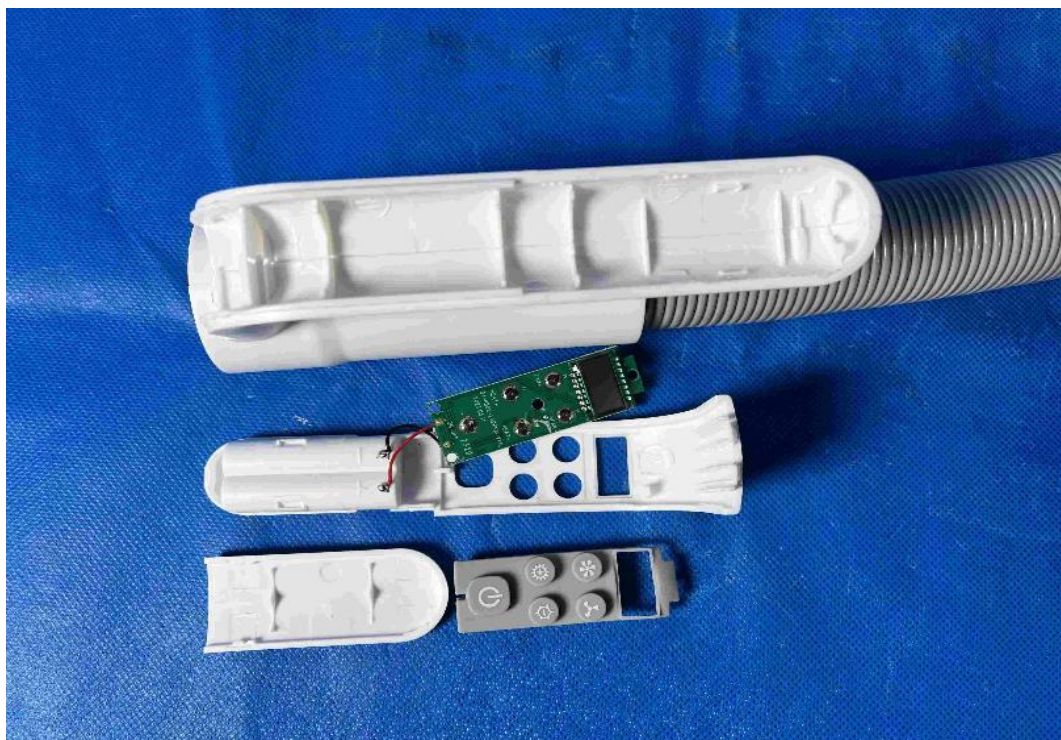


### 3.0 Product Photographs

**Photo 15** - Remote control view of model BJ-PB02A



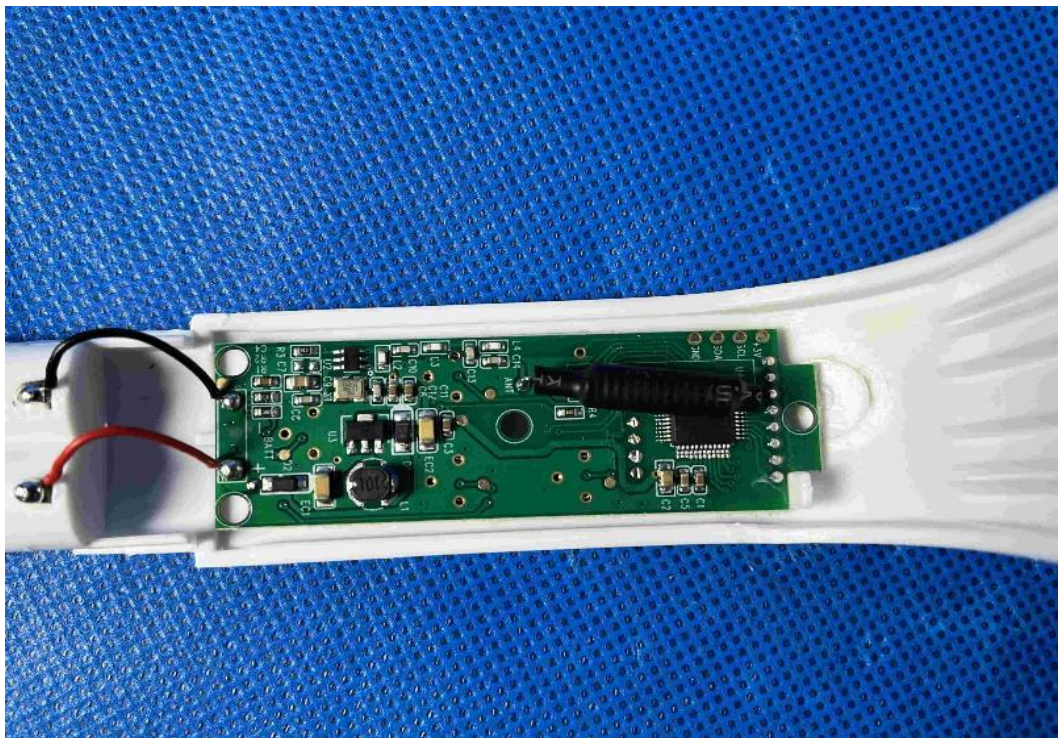
**Photo 16** - Remote control view of model BJ-PB02A





### 3.0 Product Photographs

**Photo 17** - Remote control view of model BJ-PB02A



**Photo 18** - External view of model BJ-PB02B



4.0 Critical Components						
Photo #	Item no. <sup>1</sup>	Name	Manufacturer/ trademark <sup>2</sup>	Type / model <sup>2</sup>	Technical data and securement means	Mark(s) of conformity <sup>3</sup>
1	1	Marking label (not shown)	GUANGDONG TIANYUE PRINTING TECH. CO., LTD.	TY968-125	UL category PGDQ2&8. Suitable for plastic surface, at least 60°C. Affixed on the surface of main enclosure.	cURus
			Various	Various	UL category PGDQ2&8. Suitable for plastic surface, at least 60°C. Affixed on the surface of main enclosure.	
1	2	Power supply cord (not shown)	Various	SJT	14 AWG×2C, 105°C, 300V, VW-1. Extended 1.8-2.74m. Terminated in 2-wire polarized attachment plug, NEMA Config. 1-15P.	cULus or cETLus
2	3	Main enclosure	KINGFA SCI & TECH CO LTD	FW-620T (f1)	ABS. Rated: V-0, HWI=2, HAI=0, RTI=(90, 80, 90), Measured Min. thickness: 2.3mm.	cURus
2	4	Handle	KINGFA SCI & TECH CO LTD	FW-620T (f1)	ABS. Rated: V-0, HWI=2, HAI=0, RTI=(90, 80, 90), Min. thickness: 1.2mm.	cURus
3	5	Rear Cover	KINGFA SCI & TECH CO LTD	FW-620T (f1)	ABS. Rated: V-0, HWI=2, HAI=0, RTI=(90, 80, 90), Min. thickness: 1.0mm. Openings max. 6.7 mm in width.	cURus
6	6	Rear enclosure	KINGFA SCI & TECH CO LTD	FW-620T (f1)	ABS. Rated: V-0, HWI=2, HAI=0, RTI=(90, 80, 90), Min. thickness: 1.5mm. Openings max. 9 mm in OD. Secured to Main enclosure by snap-fit.	cURus
6	7	Cord anchorage	LG Chem (Guangzhou) Engineering Plastics Co Ltd	LUMID GN2301AF	PA6. Rated: V-0, HWI=1, HAI=0, RTI=(110, 125, 120), Min. thickness: 1.5mm. Fixed to Rear enclosure by screws. Refer to Illustration 5 for layout.	cURus
7	8	Anion generator	CIXI HONGE ELECTRIC APPLIANCES CO LTD	FF-353Rc	Rated: I/P: AC100-130V, 50/60Hz. O/P: -2.5~-4.5kVDC. P: 1W.	cURus
8	9	Front enclosure	KINGFA SCI & TECH CO LTD	FW-620T (f1)	ABS. Rated: V-0, HWI=2, HAI=0, RTI=(90, 80, 90), Min. thickness: 1.5mm. Secured to Main enclosure by snap-fit.	cURus
8	10	NTC assemble	Various	Various	Fixed to heating support by screw. It consist of 10a to a0c.	NR
8	10a	NTC sensor (Not shown)	ANHUI EAGLE ELECTRON CO LTD	MF58-104X3950YA	Resistance at 25°C: 100k ohm, Tmoa: 250°C, Class C3.	cURus



4.0 Critical Components						
Photo #	Item no. <sup>1</sup>	Name	Manufacturer/ trademark <sup>2</sup>	Type / model <sup>2</sup>	Technical data and securement means	Mark(s) of conformity <sup>3</sup>
8	10b	PTFE tube (Not shown)	Various	Various	PTFE. Rated: 300 or 600 volts, not less than 200°C, VW-1.	cURus
8	10c	NTC wiring (Not shown)	Various	1332	24AWG, 300V, T200.	cURus
8, 9	11	Inner housing	LG Chem (Guangzhou) Engineering Plastics Co Ltd	GP-3156F(#)	PP. Rated: V-0, 5VA, HWI=3, HAI=0, RTI=(125, 120, 120), Min. thickness: 2mm.	cURus
9	12	Bracket	LG Chem (Guangzhou) Engineering Plastics Co Ltd	PA-RG305(a)	PA66+30%GF. Rated: V-0, HWI=0, HAI=0, RTI=(100, 80, 95), Min. thickness: 1.6mm.	cURus
9	13	Motor	ZheJiang Beijing Technology Co., Ltd	V1J-PH22-T	Rated 120V, 60Hz, 1200W. Class A.	See 5.0
10	14	Mica sheet	Various	Various	Multilayer Mica pieces. Rated V-0, 200°C, Measured min 0.8mm thick. The end of Heating Element inside of the front end at 12mm.	cURus
10	15	Heating wire	Foshan Qiyi Orange Electric Appliance Co., LTD	0Cr25Al5	120V, 60Hz, 550W. Coiled and seated in notches of mica frame, element end are secured to the mica frame by eyelet rivets.	NR
10	16	Thermal link	DONGGUAN BETTER ELECTRONICS TECHNOLOGY CO LTD	BTT015157	Rated: 125/250V, 15A, Tf: 157°C. Riveted on the mica plate.	cURus
				BTT157C 15A	Rated: 125/250V, 15A, Tf: 157°C. Riveted on the mica plate.	cURus
				BTT010157	Rated: 125/250V, 10A, Tf: 157°C. Riveted on the mica plate.	cURus
				BTT157C 10A	Rated: 125/250V, 10A, Tf: 157°C. Riveted on the mica plate.	cURus
			A.R. ELECTRIC CO., LTD	F00157C	Rated: 120V, 15A, Tf: 157°C. Riveted on the mica plate.	cURus
10	17	Thermal cut-out	ZHONGSHAN CHUANCHENG PRECISION ELECTRONICS CO LTD	CCS9	Rated: 125V~, 20A, Tf100°C, 10000 cycles. Riveted on the mica plate.	cURus
			Zhongshan yongyang electronic technology co., Ltd	YY10	Rated: 125V~, 18A, Tf100°C, 10000 cycles. Riveted on the mica plate.	cURus
13	18	PCB (Not shown)	Various	Various	Rated V-0, Min. 1.6mm thickness, 130°C. Met UL 796.	cURus

4.0 Critical Components						
Photo #	Item no. <sup>1</sup>	Name	Manufacturer/ trademark <sup>2</sup>	Type / model <sup>2</sup>	Technical data and securement means	Mark(s) of conformity <sup>3</sup>
13	19	Thermistor	Various	Various	NTC type.	cURus
13	20	X capacitor	Various	Various	Rated: Min. 250V, 0.1μF, 85°C.	cURus
13	21	Varistor	Various	Various	Rated: Min. 175VAC, Min. 85°C.	cURus
13	22	Current fuse	XC ELECTRONICS (SHENZHEN) CORP LTD	5TE	Rated 250V, T3.15A.	cURus
			DONGGUAN BETTER ELECTRONICS TECHNOLOGY CO LTD	932	Rated 250V, T3.15A.	cURus
			DONGGUAN CHEVRON ELECTRONIC TECHNOLOGY CO LTD	SET	Rated 250V, T3.15A.	cURus
			DONGGUAN HONGDA ELECTRONIC TECHNOLOGY CO LTD	2009	Rated 250V, T3.15A.	cURus
13	23	Quick connector (Not shown)	Various	Various	Type 187 or 250. met UL 310.	cURus
13	24	Internal wire (Not shown)	Various	1007	16-22AWG, 300V, T80, use for connecting internal components except heater.	cURus
			Various	3122	16-22AWG, 300V, T200, use for connecting internal components.	cURus
			Various	1332	16-22AWG, 300V, T200, use for connecting internal components.	cURus
			Various	2651	24-26AWG, 300V, T105, use for connecting between power PWB and control PWB.	cURus
			Various	2468	26AWG, 300V, T80, use for connecting between power PWB and control PWB.	cURus



#### 4.0 Critical Components

Photo #	Item no. <sup>1</sup>	Name	Manufacturer/ trademark <sup>2</sup>	Type / model <sup>2</sup>	Technical data and securement means	Mark(s) of conformity <sup>3</sup>
15	25	Control handle	Various	Various	Plastic. Rated min. HB, min. 60°C. Measured min. thickness 2.0mm.	cURus

NOTES:

- 1) Not all item numbers are indicated (called out) in the photos, as their location is obvious.
- 2) "Various" means any type, from any manufacturer that complies with the "Technical data and securement means" and meets the "Mark(s) of conformity" can be used.
- 3) Indicates specific marks to be verified, which assures the agreed level of surveillance for the component. "NR" - indicates Unlisted and only visual examination is necessary. "See 5.0" indicates Unlisted components or assemblies to be evaluated periodically refer to section 5.0 for details.

## 5.0 Critical Unlisted CEC Components

### INSULATED COIL

Photo #	Item no.	Name	Manufacturer/Trademark	Type / model
9	13	Motor	ZheJiang Beijing Technology Co., Ltd	V1J-PH22-T

Electrical Rating: 120V, 60Hz, 1200W Insulation class A

Component Standard used: UL 1004-1, UL 1004-3, CSA C22.2#77

### MATERIALS LIST (refer to illustration 4 for assembly drawing)

Component	Manufacturer	Type/model	Dimensions/thickness/assembly information
Commutator	OTALITE CO LTD	PG-9250G	UL recognized. PMC. Rated: 94V-0, RTI=150, Min. thickness: 3.2mm.
End spider, Stator frame	E I DUPONT DE NEMOURS & CO INC	FR530L(I)(+)(f1)	UL recognized. PET. Rated: 94V-0, HWI=0, HAI=1, RTI=155, Min. thickness: 1.5mm.
Slot liners of stator winding	SICHUAN DONGFANG INSULATING MATERIAL CO LTD	6641 (F-DMD)	UL recognized. Insulation System Designation: DF-155. Class 155.
Slot liners of rotor winding	SICHUAN DONGFANG INSULATING MATERIAL CO LTD	6644 (F-DM)	UL recognized. Insulation System Designation: DF-155. Class 155.
Slot wedge	SICHUAN DONGFANG INSULATING MATERIAL CO LTD	6641 (F-DMD)	UL recognized. Insulation System Designation: DF-155. Class 155.
Varnish	JIAXING QINGHE GAOLI INSULATION MATERIAL CO LTD	0840-D	UL recognized. Rated: Class 220.
Rotor winding	SUZHOU COILL SPECIAL WIRE & CABLE CO LTD	Q(ZY/XY)-2/200	UL recognized. MW 35-C. Class 200.
	ZHEJIANG GRANDWALL ELECTRIC SCIENCE & TECHNOLOG CO LTD	Q(ZY/XY)-2/200	UL recognized. MW 35-C. Class 200.
Stator winding	TONGLING KINGKONG ELECTRONICS TECHNOLOGY CO LTD	Q(ZY/XY)A-2/220	UL recognized. MW 35-A. Class 220.
	ANHUI JINGER ELECTRICAL TECHNOLOGY CO LTD	Q(ZY/XY)L-2/220	UL recognized. MW 35-A. Class 220.



5.0 Critical Unlisted CEC Components						
Sleeving	Various	Various	UL recognized. Rated: 600V, 200°C, VW-1.			
Brush holder	CHANGSHU SOUTH-EAST PLASTIC CO LTD	PF2A4-151J	UL recognized. PMC. Rated: 94V-0, HWI=1, HAI=3, RTI=150, Min. thickness: 1.5mm.			
Thermal protector	SUZHOU INDUSTRIAL PARK KAIN ELECTRONIC SCI & TECH CO LTD	17AM-KP Series	UL recognized. Rated: 120V, Tf: 115°C. Manually reset thermal + PTC protector.			
WINDING(S) RESISTANCE						
Winding Designation	Wire Size (mm)	Wire Type	Turns	Volts	Amps	DC resistance (Ω) +/- 10%:
Stator winding	Ø0.88mm	MW 35-A	NA	NA	NA	0.323
Rotor winding	Ø0.46mm	MW 35-C	NA	NA	NA	0.732
VERIFICATION PROCESS						
Frequency: <b>Annual</b>	Test Site: <b>CEC</b>			Number of samples to test: <b>1</b>		
Test Name		Test Parameters				
Winding resistance		See resistance per winding above.				
Dielectric Strength		Apply voltage Between		Test Voltage	Test Time	
		Primary to core		1240	60s	
		Primary to secondary		NA	NA	
		Secondary to core		NA	NA	

## 6.0 Critical Features

Recognized Component - A component part, which has been previously evaluated by an accredited certification body with restrictions and must be evaluated as part of the basic product considering the restrictions as specified by the Conditions of Acceptability.

Listed Component - A component part, which has been previously Listed or Certified by an accredited Certification Organization with no restrictions and is used in the intended application within its ratings.

Unlisted Component - A part that has not been previously evaluated to the appropriate designated component standard. It may also be a Listed or Recognized component that is being used outside of its evaluated Listing or component recognition.

Critical Features/Components - An essential part, material, subassembly, system, software, or accessory of a product that has a direct bearing on the product's conformance to applicable requirements of the product standard.

Construction Details - For specific construction details, reference should be made to the photographs and descriptions. All dimensions are approximate unless specified as exact or within a tolerance. In addition to the specific construction details described in this Report, the following general requirements also apply.

1. Spacing - In primary circuits, 1.6 mm minimum spacing are maintained through air and over surfaces of insulating material between current-carrying parts of opposite polarity and 3.2 mm minimum between such current-carrying parts and dead-metal parts or low voltage isolated circuits. 6.3 mm minimum between open-coil heating elements and a conductive enclosure, including the discharge guard.
2. Mechanical Assembly - Components such as switches, fuseholders, connectors, wiring terminals and display lamps are mounted and prevented from shifting or rotating by the use of lockwashers, starwashers, or other mounting format that prevents turning of the component.
3. Corrosion Protection - All ferrous metal parts are protected against corrosion by painting, plating or the equivalent.
4. Accessibility of Live Parts - All uninsulated live parts in primary circuitry are housed within a metal enclosure constructed with no openings other than those specifically described in Sections 4 and 5.
5. Grounding - This product is not provided with a means of grounding since it is rated less than 150 V and appliances having no dead metal parts likely to become energized which are in contact with water.
6. Polarized Connection - This product is provided with a polarized power supply connection. All single pole switches and fuses are connected only to the ungrounded supply circuit conductor.
7. Internal Wiring - Internal wiring is routed away from sharp or moving parts. Internal wiring leads terminating in soldered connections are made mechanically secure prior to soldering. Recognized Component separable (quick disconnect) connectors of the positive detent type, closed loop connectors, or other types specifically described in the text of this report are also acceptable as internal wiring terminals. At points where internal wiring passes through metal walls or partitions, the wiring insulation is protected against abrasion or damage by plastic bushings or grommets.
8. Schematics - Refer to Illustration 2, 3 for schematics requiring verification during Field Representative Inspection Audits.
9. Markings - The product is marked on a labeling system as described in item 1 of Section 4.0 as follows:
  - applicant's name or brand name
  - model number
  - The date or other dating period of manufacture not exceeding any three consecutive months
  - The complete electrical rating
10. Cautionary Markings - The following, in letters not less than 2.4mm high, are required:  
"CAUTION/ Avertissement:  
Household Use Only /Usage domestique seulement  
Do not immerse in water / Ne pas plonger dans l'eau  
This appliance has a polarized plug (one blade is wider than the other). To reduce the risk of electric shock, this plug is intended to fit in a polarized outlet only one way. If the plug does not fit fully in the outlet, reverse the plug. If it still does not fit, contact a qualified electrician. Do not modify the plug in any way. /  
Cet appareil dispose d'une prise polarisée (une lame est plus large que l'autre). Pour réduire les risques d'électrocution, cette fiche ne peut être montée que d'une manière dans une prise polarisée. Si la prise n'est pas entièrement installée dans la prise, inversez la prise. Si cela ne convient toujours pas, contactez un électricien qualifié. Ne modifiez en aucune façon la fiche."



#### **6.0 Critical Features**

11. Installation, Operating and Safety Instructions - Instructions for installation and use of this product are provided by the manufacturer. The instructions shall be legible and shall include the words "READ AND SAVE THESE INSTRUCTIONS", which shall be more prominent than the general text used in the manual, booklet, or the like. For details, refer to Illustration 1 for layout.
12. Logo Dependent Marking - The required marking is not dependent on the specific ETL logo applied to the product as authorized by the Authorization to Mark.
13. Production Control - No additional production control is necessary.

## 7.0 Illustrations

### Illustration 1 - Important Instruction

Remark: Only the part of instruction listed in report.

Household Use Only.

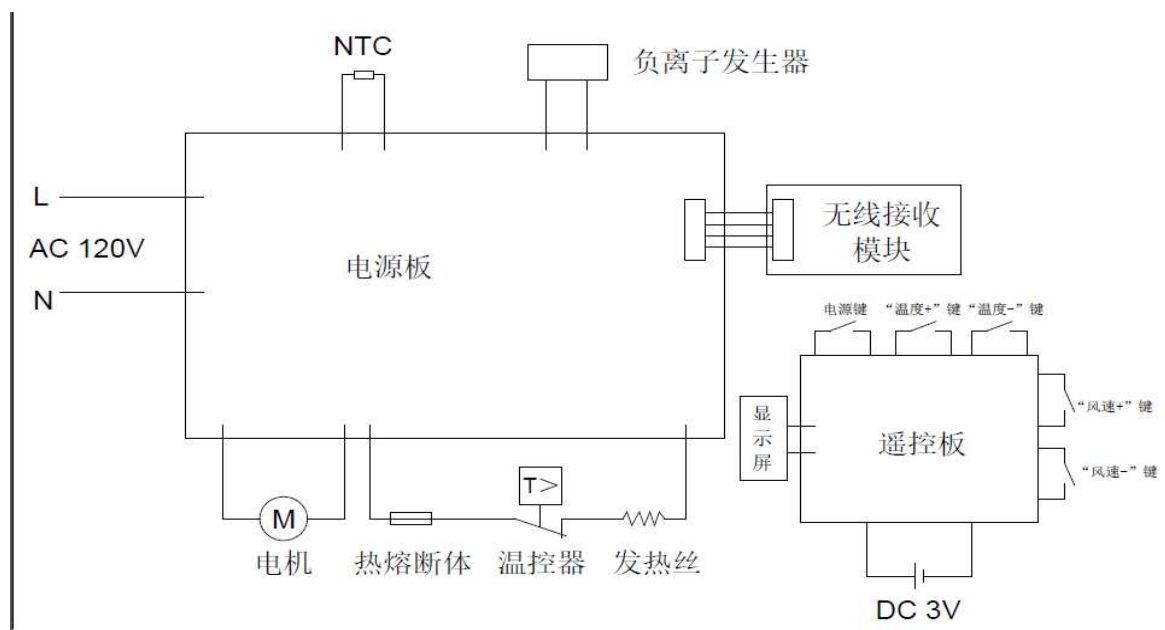
Do not immerse in water.

This appliance has a polarized plug (one blade is wider than the other). To reduce the risk of electric shock, this plug is intended to fit in a polarized outlet only one way. If the plug does not fit fully in the outlet, reverse the plug. If it still does not fit, contact a qualified electrician. Do not modify the plug in any way.



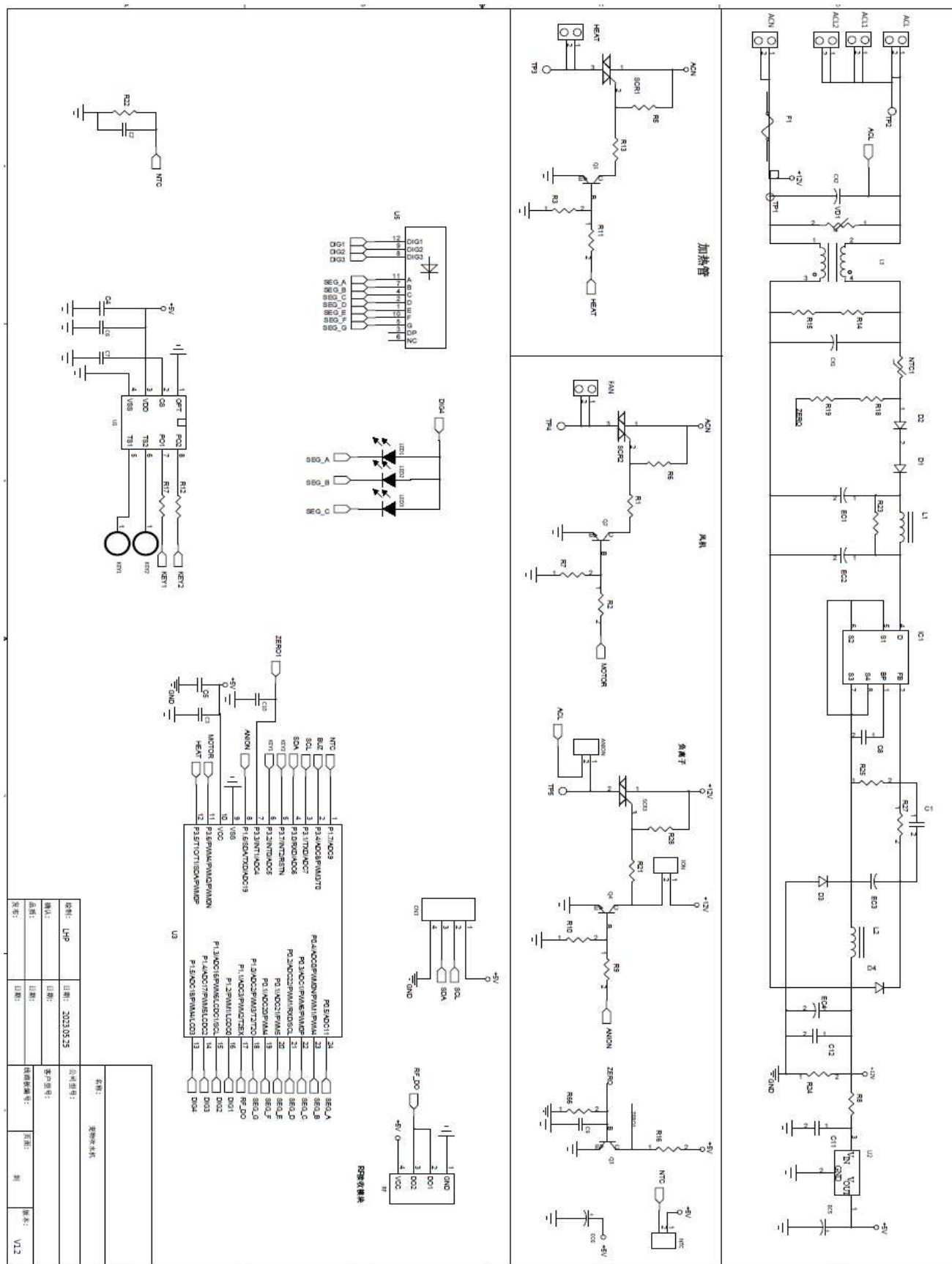
## 7.0 Illustrations

Illustration 2 - Schematic of Wiring



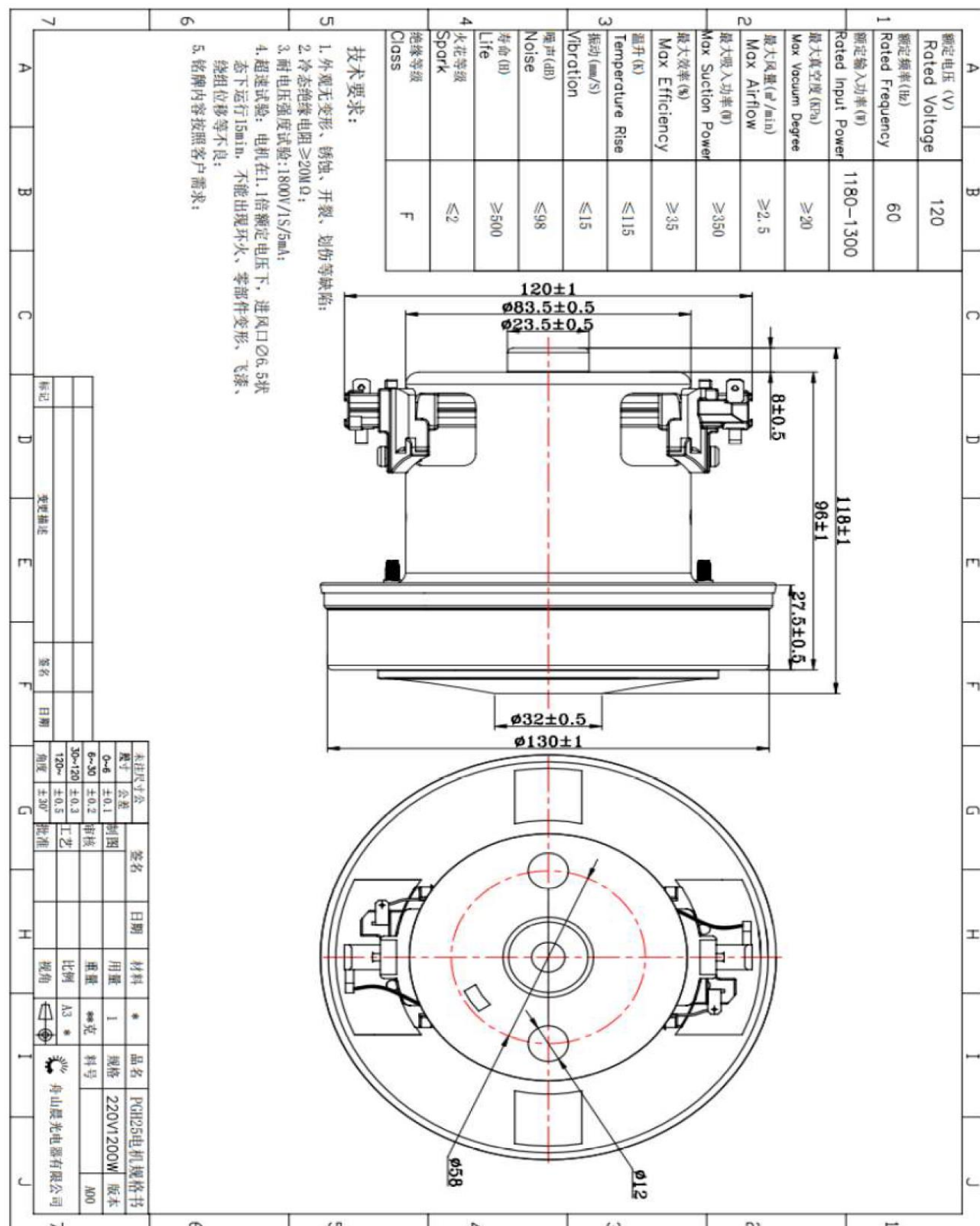
## 7.0 Illustrations

Illustration 3 - Schematic of Wiring



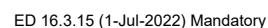
## 7.0 Illustrations

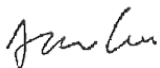

Illustration 4 - Specification of motor V1J-PH22-T





### Illustration 5 - Specification of Cord anchorage



8.0 Test Summary				
Evaluation Period	14-Sep-2023 to 4-Dec-2023		Project No.	230914057GZU
Sample Rec. Date	14-Sep-2023	Condition	Prototype	Sample ID. S230914057-001~006
Test Location	Intertek Testing Services Shenzhen Ltd., Shunde Branch Room 202/203/204, Block 8, Tianfulai International Industrial Park, No. 3 Changfu West Road, Rongli Community, Ronggui Subdistrict, Shunde District, Foshan, Guangdong, China			
Test Procedure	Testing Lab			
Determination of the result includes consideration of measurement uncertainty from the test equipment and methods. The product was tested as indicated below with results in conformance to the relevant test criteria.				
Due to the motor had performed under Intertek Report 221200198HZH-001, only the following testing were performed:				
Test Description	UL 499:2014 Ed.14+R:14Jun2022 / Clause	CSA C22.2#36:2008 Ed.7+U1;U2 / Clause	UL 746C:2018 Ed.7+R:30Jun2022 / Clause	
Power Input Test	33	7.2	--	
Leakage Current Test	34	7.5	--	
Normal Temperature Test	36	7.4	--	
Test of Insulation Resistance and Leakage Current As Result of Moisture	37	--	--	
Dielectric Voltage - Withstand Test	38	7.6	--	
Resistance to Impact	40	7.13	--	
Abnormal Operation Test- General	42.1	7.7	--	
Heating Appliances Employing Fans or Blowers	42.18	--	--	
Testing of Component Switches and control Devices	43	7.9	--	
Strain Relief Test	44	7.12	--	
Push-back Relief Test	45	--	--	
Test of Thermal cutoffs (fusible links)	23	7.8	--	
Stability	--	7.10	--	
Strain-Relief Test After Mold Stress-Relief Distortion	--	--	31	
Resistance to Impact	--	--	56	
Mold Stress Relief Distortion	--	--	61	
Evaluation Period	21-Sep-2023 to 25-Sep-2023		Project No.	230921091GZU
Sample Rec. Date	21-Sep-2023	Condition	Prototype	Sample ID. S230921091-001
Test Location	Intertek Testing Services Shenzhen Limited Guangzhou Branch Room 02, &101/E201/E301/E401/E501/E601/E701/E801 of Room 01 1-8/F., No. 7-2, Caipin Road, Science City, GETDD Guangzhou, China			
Test Procedure	Testing Lab			
Determination of the result includes consideration of measurement uncertainty from the test equipment and methods. The product was tested as indicated below with results in conformance to the relevant test criteria.				
Test Description	UL 859:2012 Ed.11+R:11Nov2022/ Clause	/	/	
Ozone Test	67	--	--	
Test Engineer	Mandy Luo	--	--	
Test Reviewer	Benson Li	--	--	
8.1 Signatures				
A representative sample of the product covered by this report has been evaluated and found to comply with the applicable requirements of the standards indicated in Section 1.0.				
Completed by:	Agan Gan	Reviewed by:	Frencky Wu	
Title:	Project Engineer	Title:	Sr. Project Engineer	
Signature:		Signature:		

## 9.0 Correlation Page For Multiple Listings

The following products, which are identical to those identified in this report except for model number and Listee name, are authorized to bear the ETL label under provisions of the Intertek Multiple Listing Program.

BASIC LISTEE	ZheJiang Beijing Technology Co., Ltd
Address	No. 258, Qingchuan road, Huzhen town, Jinyun County, LISHUI CITY, Zhejiang Province
Country	China
Product	Pet dryer

MULTIPLE LISTEE 1	None
Address	
Country	
Brand Name	
ASSOCIATED MANUFACTURER	
Address	
Country	
MULTIPLE LISTEE 1 MODELS	BASIC LISTEE MODELS

MULTIPLE LISTEE 2	None
Address	
Country	
Brand Name	
ASSOCIATED MANUFACTURER	
Address	
Country	
MULTIPLE LISTEE 2 MODELS	BASIC LISTEE MODELS

MULTIPLE LISTEE 3	None
Address	
Country	
Brand Name	
ASSOCIATED MANUFACTURER	
Address	
Country	
MULTIPLE LISTEE 3 MODELS	BASIC LISTEE MODELS



## 10.0 General Information

The Applicant and Manufacturer have agreed to produce, test and label ETL Listed products in accordance with the requirements of this Report. The Manufacturer has also agreed to notify Intertek and to request authorization prior to using alternate parts, components or materials.

### COMPONENTS

Components used shall be those itemized in this Intertek report covering the product, including any amendments and/or revisions.

### LISTING MARK

The ETL Listing mark applied to the products shall either be separable in form, such as labels purchased from Intertek, or on a product nameplate or other media only as specifically authorized by Intertek. Use of the mark is subject to the control of Intertek.

The mark must include the following four items:

- 1) applicable country identifiers "US" and/or "C" or "US", "C" and "EU"
- 2) the word "Listed" or "Classified" or "Recognized Component" (whichever is appropriate)
- 3) a control number issued by Intertek
- 4) a product descriptor that identifies the standards used for certification. Example:

**For US standards**, the words, "Conforms to" shall appear with the standard number along with the word, "Standard" or "Std." Example: "Conforms to ANSI/UL Std. XX."

**For Canadian standards**, the words "Certified to CAN/CSA Standard CXX No. XX." shall be used, or abbreviated, "Cert. to CAN/CSA Std. CXX No. XX."

Can be used together when both standards are used.

**If all standards on the ATM have the same standard title**, the shared title or its abbreviation may be used in place of the examples above. Example: "Medical Electrical Equipment" or "MEE"; "Information Technology Equipment" or "ITE"; "Audio/Video Information And Communication Technology Equipment" or "A/V ICTE".

**Note: A facsimile must be submitted to Intertek, Attn: Follow-up Services for approval prior to use.**

The facsimile need not have a control number. A control number will be issued **after signed Certification Agreements** have been received by the Follow-up Services office, approval of the facsimile of your proposed Listing Mark, satisfactory completion of the Listing Report, and scheduling of a factory assessment in your facility.

### MANUFACTURING AND PRODUCTION TESTS

Manufacturing and Production Tests shall be performed as required in this Report.

### FOLLOW-UP SERVICE

Periodic unannounced audits of the manufacturing facility (and any locations authorized to apply the mark) shall be scheduled by Intertek. An audit report shall be issued after each visit. Special attention will be given to the following:

1. Conformance of the manufactured product to the descriptions in this Report.
2. Conformance of the use of the ETL mark with the requirements of this Report and the Certification Agreement.
3. Manufacturing changes.
4. Performance of specified Manufacturing and Production Tests.

In the event that the Intertek representative identifies non-conformance(s) to any provision of this Report, the Applicant shall take one or more of the following actions:

1. Correct the non-conformance.
2. Remove the ETL Mark from non-conforming product.
3. Contact the issuing product safety evaluation center for instructions.

### 10.1 Evaluation of Unlisted Components

Because Unlisted Components are uncontrolled, and they do not fall under a third party follow up program, Intertek may require these components to be tested and/or evaluated at least once annually, more often for certain components, as part of the independent certification process. The Unlisted Components in Section 5.0 require testing and/or evaluation as indicated.

**The Applicant will be notified, in writing, via the applicable contact methods, as defined in Section 1.0, when these components must be selected and sent to Component Evaluation Center (CEC) for re-evaluation.**

**Due to particular testing requirements, some components may be requested to be shipped to specific labs. Thus, specific shipment destination(s) for each sample will be provided in the written notification.**

Managing CEC Location:

Intertek Testing Services Shenzhen Ltd., Shunde Branch

ETL Component Evaluation Center

Room 202/203/204, Block 8, Tianfulai International Industrial Park, No.3, Changfu West Road, Rongli Community, Ronggui Subdistrict, Shunde District, Foshan, Guangdong, China

Attn: Ms. Joey Kuang

Sample Disposition: Due to the destructive nature of the testing, all samples will be discarded at the conclusion of testing unless, the manufacturer specifically requests the return of the samples. The request for return must accompany the initial component shipment.

## 11.0 Manufacturing and Production Tests

The manufacturer agrees to conduct the following Manufacturing and Production Tests as specified:

### Required Tests

Dielectric Voltage Withstand Test  
Polarization continuity test

## 11.1 Dielectric Voltage Withstand Test

### Method

One hundred percent of production of the products covered by this Report shall be subjected to a routine production line dielectric withstand test.

The test shall be conducted on products, which are fully assembled. Prior to applying the test potential, all switches, contactors, relays, etc., should be closed so that all primary circuits are energized by the test potential. If all primary circuits cannot be tested at one time, then separate applications of the test potential shall be made.

The test voltage specified below shall be applied between primary circuits and accessible dead-metal parts. The test voltage may be gradually increased to the specified value but must be maintained at the specified value for one second or one minute as required.

### Test Equipment

The test equipment shall incorporate a transformer with an essentially sinusoidal output, a means to indicate the applied test potential, and an audible and/or visual indicator of dielectric breakdown.

The test equipment shall incorporate a voltmeter in the output circuit to indicate directly the applied test potential if the rated output of the test equipment is less than 500VA.

If the rated output of the test equipment is 500VA or more, the applied test potential may be indicated by either:

- 1 - a voltmeter in the primary circuit;
- 2 - a selector switch marked to indicate the test potential; or
- 3 - a marking in a readily visible location to indicate the test potential for test equipment having a single test potential output.

In cases 2 and 3, the test equipment shall include a lamp or other visual means to indicate that the test potential is present at the test equipment output. All test equipment shall be maintained in current calibration.

### **Products Requiring Dielectric Voltage Withstand Test:**

<u>Product</u>	<u>Test Voltage</u>	<u>Test Time</u>
All products covered by this Report.	1000 VAC	60 s
	or	
	1200 VAC	1 s

## 11.2 Polarization continuity test

### Method

At least once per quarter per luminaire design shall be checked to verify that there is electrical continuity between the grounded supply-circuit conductors, The thermostat shall be connected to conductor with Black-color insulation. The continuity shall be determined by using an indicating device such as an ohmmeter or other continuity testing device

### Test Records:

Test records shall be retained for a period of at least six months, and shall include test quantity, test dates, catalog or model numbers, test results, and disposition of any non-complying products.

### **Products Requiring Polarization continuity test:**

All products covered by this Report.



The following changes are in compliance with the declaration of Section 8.1:

[illegible]